

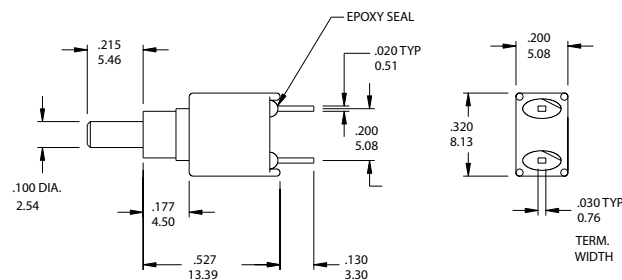
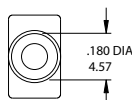


SPST



Model No.	Switching position	
ES-21	Off	Mom
Term. Comm.	open	1-2

SCHEMATIC



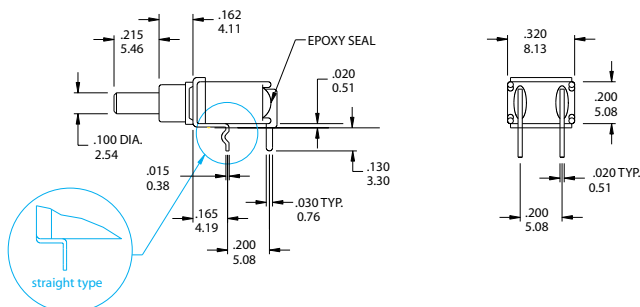
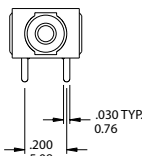
ES-21-CR

SPST



Model No.	Switching position	
ES-21A	Off	Mom
Term. Comm.	open	1-2

SCHEMATIC



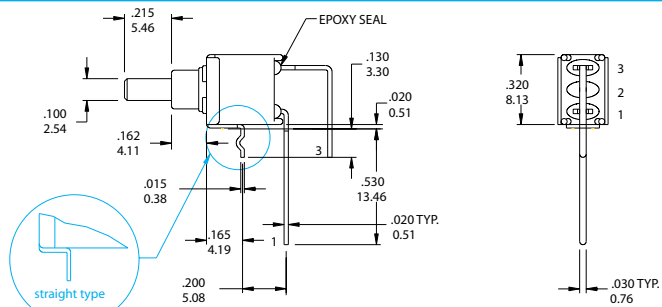
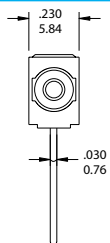
ES-21A-R-S/ ES-21A-R

SPST



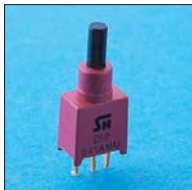
Model No.	Switching position	
ES-21B	Off	Mom
Term. Comm.	open	1-2

SCHEMATIC



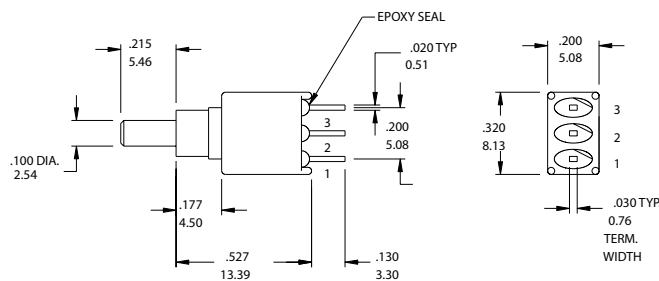
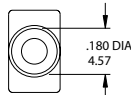
ES-21B-R-S/ ES-21B-R

SPDT



Model No.	Switching position	
ES-22	On	Mom
Term. Comm.	2-1	2-3

SCHEMATIC



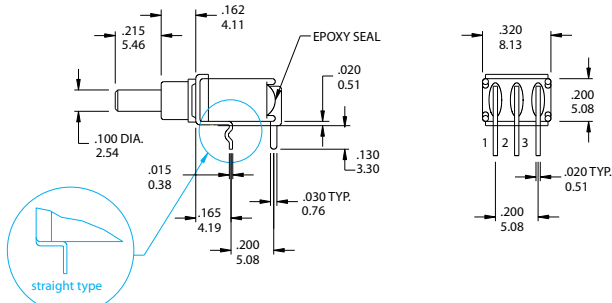
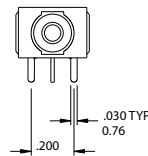
ES-22-CR

SPDT



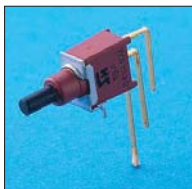
Model No.	Switching position	
ES-22A	On	Mom
Term. Comm.	2-1	2-3

SCHEMATIC



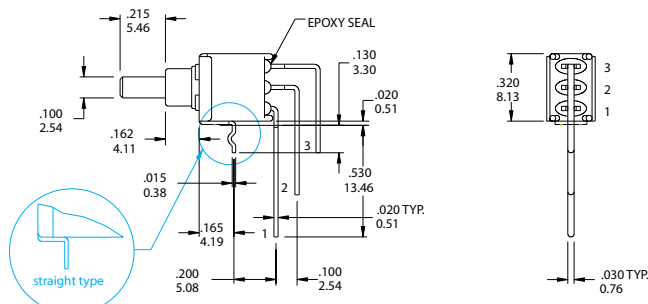
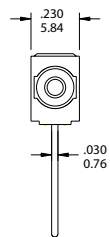
ES-22A-R-S/ ES-22A-R

SPDT



Model No.	Switching position	
ES-22B	On	Mom
Term. Comm.	2-1	2-3

SCHEMATIC



ES-22B-R-S/ ES-22A-R

INDEX

TOGGLE

ROCKER

SLIDE

PUSHBUTTON

DIP

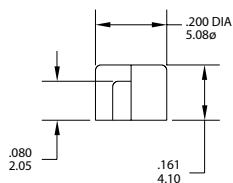
TACT



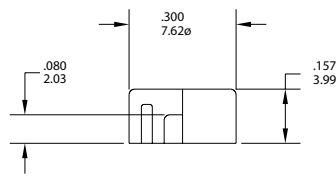
Cap Option

Cap color Option

CV

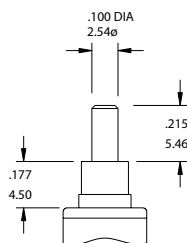


CV1

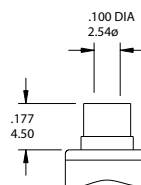


CAP & ACTUATOR OPTIONS	
1	White
2	Black(Std.)
3	Red
4	Orange
5	Yellow
6	Green
7	Blue
8	Brown
9	Gray

The Plunger Option



(none) std.



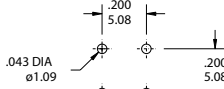
FP flush type

The P.C.B MOUNTING

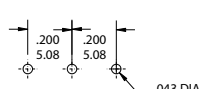
ES-21



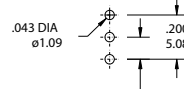
ES-21A



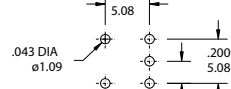
ES-21B



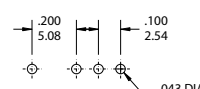
ES-22



ES-22A



ES-22B



CONTACT MATERIAL OPTIONS

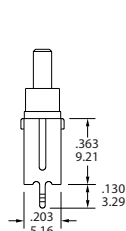
CODE	CONTACT MATERIAL	TERMINAL MATERIAL	RATING
Q	Silver plated	Silver plated	1 A @ 120V AC or 28 V DC;
R	Gold plated over nickel plated	Gold plated over nickel plated	0.4VA MAX @ 20 V AC or DC MAX
G	Gold plated over silver plated	Gold plated over silver plated	0.4 VA MAX @ 20 V AC or DC MAX or 1 A @ 120V AC or 28 V DC;
K	Gold plated over nickel plated	Tin over nickel plated	0.4VA MAX @ 20 V AC or DC MAX

* THE K option is only for some special item. Please inquire first when you need the "K" option

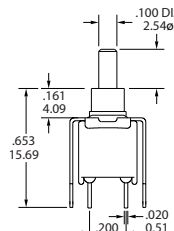
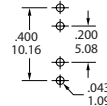
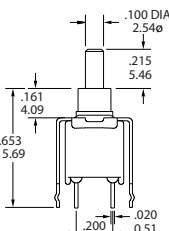
VERTICAL SUPPORT BRACKET OPTION

only for the ES-21/ES-22 .

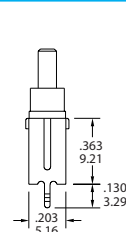
A5S



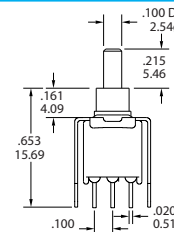
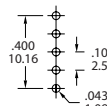
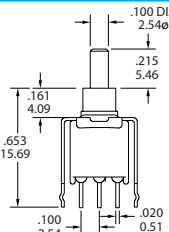
ES-21-CR-A5S (std.) snap-in type



A5 straight type



ES-22-CR-A5S (std.) snap-in type



A5 straight type